



Waterproof & Protective Coatings

Concrete Restoration

Moisture Vapor Mitigation &
Self-Leveling Underlayments
& Toppings

Injection Grouting

BETOCRETE-CP-365-CI

Integral Crystalline Waterproofing
System for Concrete





Crystalline waterproofing systems with innovative 3-in-1 technology

Concrete is a porous material by nature, left untreated it will suffer damage and significantly reduced service times. Protect your concrete from the day it is poured with AQUAFIN-IC Crystalline waterproofing solutions!

The BETOCRETE®-C System is the first choice for any concrete structure subject to contact with water. Protect your concrete with the ultimate waterproofing solution.

Crystalline Technology

Hydrophilic function

- Water and the chemistry within BETOCRETE® reacts with the cement free lime to create millions of nanocrystals that grow throughout the concrete matrix. As the nano-crystals form, they fill and block the concrete's capillary structure, protecting it from water ingress and "self-seal" cracks up to 0.5 mm.



Enhanced Technology

Hydrophobic Protection (WP)

- The crystalline growth develops over time, added hydrophobic properties enhance water penetration and absorption from the start.



Corrosion Inhibitor (CI)

- Steel reinforcement is protected by an active migrating corrosion inhibitor by forming a protective molecular layer. This enhances concrete durability and extends the life of the structure.



BETOCRETE is designed for all concrete structures, such as:

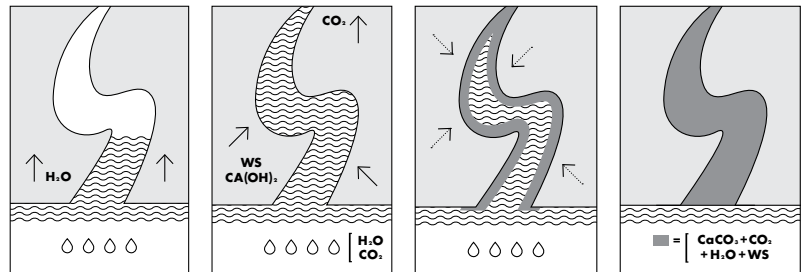
- Water treatment facilities
- Parking garages
- Docks and barges
- Concrete foundations
- Tunnels and concrete pipes
- Tanks and containers
- Power station cooling towers
- Shotcrete applications
- Concrete superstructures
- Sewage ducts and shafts
- Secant pile foundations
- Precast concrete elements



Advantages

Reduction in water penetration

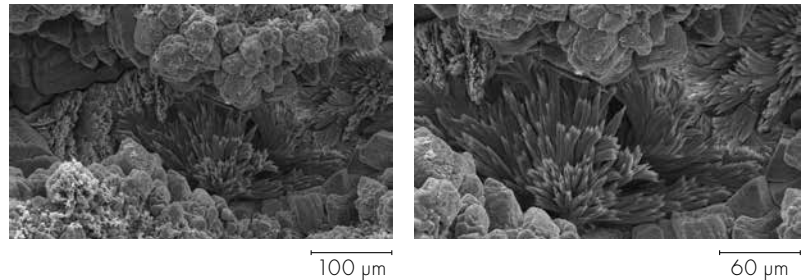
The use of BETOCRETE®-CP-365-CI reduces water penetration by up to 80%. Testing by independent laboratories has shown a reduction of water penetration into the concrete matrix from 25 mm to 5 mm. Concrete permeability is also lowered roughly 10 times.



Improving durability

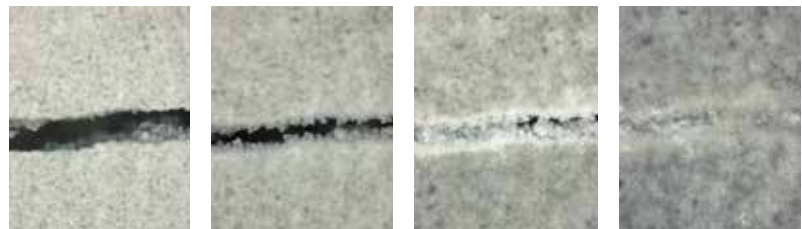
Water is the main vehicle for damaging substances to travel throughout a concrete structure and induce harmful chemical reactions.

The BETOCRETE®-CP-365-CI waterproofing admixture prolongs the lifespan of concrete structures by reducing water ingress. Independent test reports prove a considerable improvement in resistance to carbonization, chloride migration, freeze-thaw cycles and chemical attack in concrete fortified with BETOCRETE®-CP-365-CI.



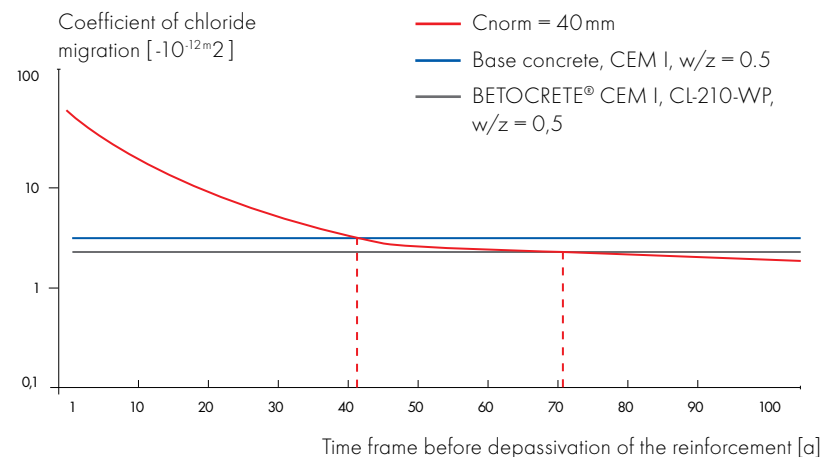
“Self healing” concrete

Every time water comes in contact with BETOCRETE-C fortified concrete, the active ingredients generate new crystalline growth - and the reaction continues for many years. Extensive testing proves that BETOCRETE®-C Series products are capable of self sealing static hairline cracks up to 1/64" (0.5 mm).



Extending concrete longevity

Waterproofing with BETOCRETE®-C Series products can extend the life-span of a building by up to 75% through providing enhanced protection for reinforcement steel. The time until depassivation of reinforcement in concrete can be delayed by up to 30 years which reduces maintenance costs and increases return on investment.



AQUAFIN Technical Support

All documentation and additional information can be found on the Aquafin website.

For detailed information contact Aquafin Technical Support directly:

www.aquafin.net

1-866-AQUAFIN (278-2346)

Aquafin Technical Support provides:

- CAD drawings
- Specifications
- Technical Datasheets
- Product Recommendations
- Product Training

Copyright 2018 by Aquafin Inc. Consult the Aquafin website for the latest version of Technical Datasheets, CAD Drawings and any technical information. Only the current version is legally binding and only for the intended market. In cases of uncertainty contact the Aquafin Technical Department for further information before starting any applications. Proper application is the responsibility of the user. Field visits by AQUAFIN personnel are for the purpose of making technical recommendations and not for supervising or providing quality control on-site.



AQUAFIN, Inc.
Triumph Industrial Park
505 Blue Ball Rd., #160
Elkton, MD 21921

Toll Free: 1-866-AQUAFIN
web: www.aquafin.net



Aquafin, Inc. is a member
of the **SCHOMBURG** Group